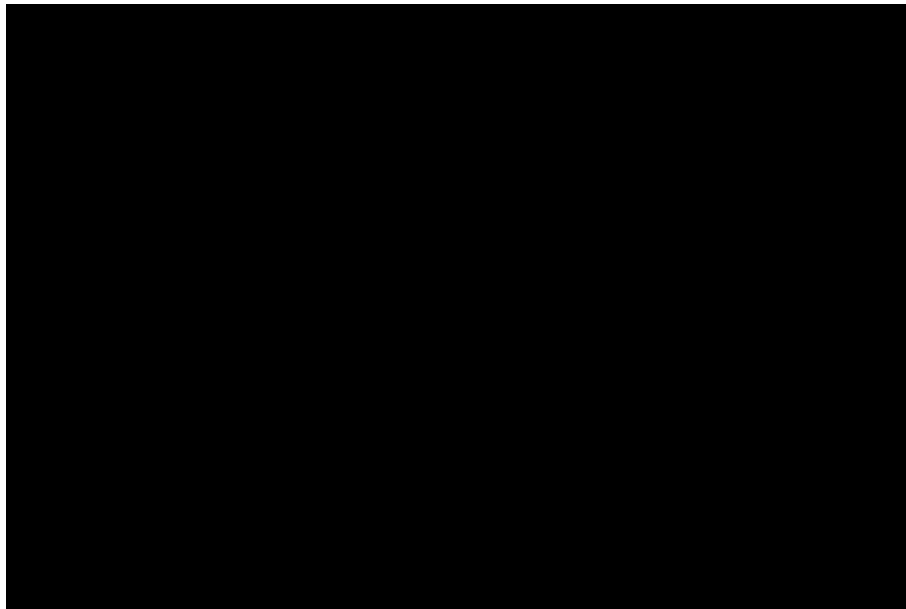


## Education and Career Guidance in Xinmin

Education and Career Guidance (ECG) is about equipping students with the necessary knowledge, skills and values to make informed decisions at each key education stage for successful transition from school to further education or work. At Xinmin Secondary School, the focus is on exploration; to help students understand themselves better in their skills, interests and abilities and guide their exploration of different education and career pathways.



What our students do?



**Secondary 1**

- Identify their VIPS (values, interests, personality and skills)
- Construct short-term goals using their VIPS



**Secondary 2**

- Explore their aspirations and make sense of their skills and interests, to make informed decisions about subject combinations
  - Reflect on their experiences to clarify their values in education and career choices
-



### Secondary 3

- Explore the diverse occupations in our workforce while identifying transferable skills to develop
- Develop skills in information gathering to help them make sound decisions in ECG



### Secondary 4

- Identifying and leveraging personal strengths
- Explore possible pathways in post-secondary education and increase awareness in course information and requirements

## Post- Secondary School Pathway

Post-secondary education comprises the paths you can take after you complete your secondary school education. Learn about the choices available for you to pursue your next phase of learning based on your interests and strengths.



**Polytechnic**



**Junior Colleges**



**Institute of Technical Education**




**International Baccalaureate**

For pathways specific to your child's profile, click on the image below for an interactive tool!

### Get started on your pathway options

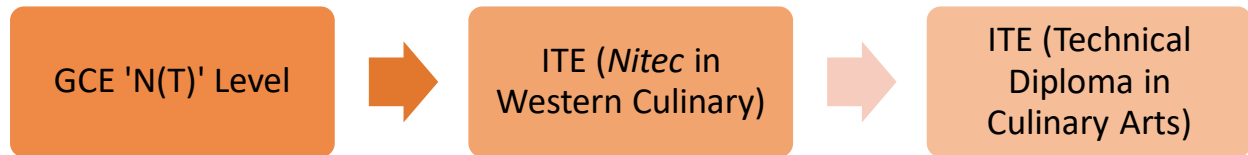
Not sure where to begin? Use our checker to find pathway options that meet your interests and strengths.



 I am  and I want to

[SHOW MY PATHWAYS](#)

## Pathways from Xinmin



### Courses related to Culinary Arts:

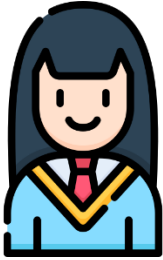
- School of Hospitality (ITE College West)
- School of Hospitality (RP)
- School of Applied Sciences (TP)

### Andrew's Pathway

Andrew completed her GCE 'N(T)' Level in Xinmin before enrolling in Nitec in Western Culinary. He did well and could progress to a Technical Diploma in Culinary Arts.

These courses helped him to deepen his interest in working as a chef and challenged his to be innovative in the pairing of ingredients and testing out of new dishes.

## Olivia's Pathway



In her time in Xinmin Secondary School, Olivia studied the course prospectus introduced during ECG lessons to find her path. She discovered her interests in both IT as well as business. Olivia was able to marry both these interests by pursuing a Diploma in Business Informatics.

GCE 'O' Level



NYP (Diploma in Business Informatics)

Courses related to Business:

- School of Business Management (NYP)
- School of Business and Accountancy (NP)
- School of Business (TP)
- SP Business School (SP)

## Diana's Pathway



Through her Science lessons, Diana developed a keen interest in biology in Xinmin. She completed her GCE 'O' Levels and enrolled into a JC where she affirmed her interest to pursue a Bachelor's Degree in Biomedical Science at NUS

GCE 'O' Level



GCE 'A' Level



NUS (Biomedical Science)

Courses related to Biomedical Science:

- School of Life Science (NP)
- School of Applied Science (RP)
- School of Chemical and Life Science (SP)
- School of Applied Science (TP)
- School of Biological Science (NTU)
- Faculty of Science (NUS)

## Course Description and Requirements

What do you want to be? How are you going to get there? Explore courses offered by different institutions, descriptions as well as entry requirements in the tool below. Click on the picture to get started!



# Skillsfuture Portal

MySkillsFuture for Students is a one-stop platform to help students better understand themselves, their interests and strengths. This portal will help your child identify career goals and making informed education and career pathways and start planning for their future.

Let's Start our Journey!

**Step 1: Discover Who You Are**

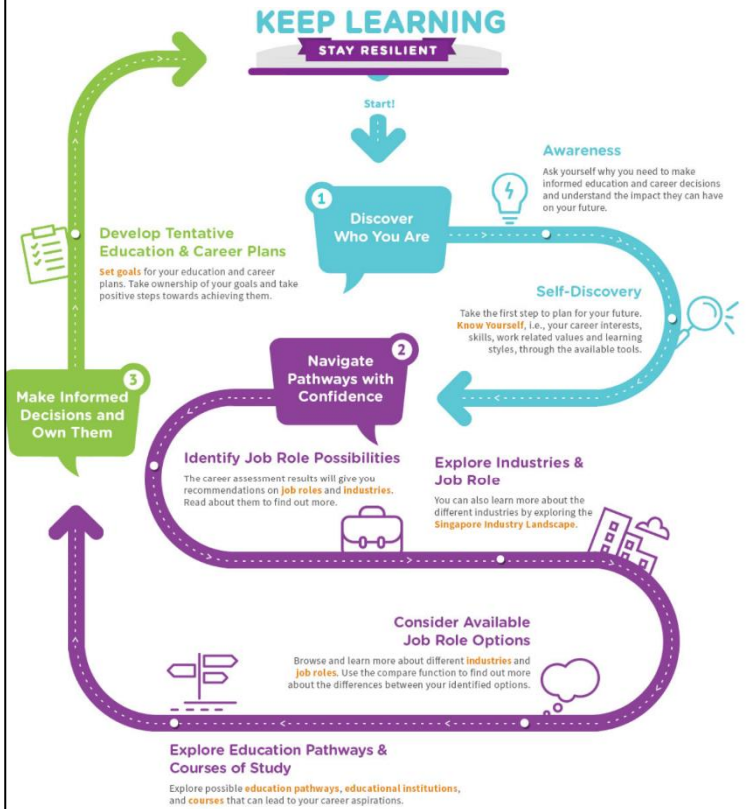
- Identify your Values, Interests, Personality and Skills(V.I.P.S) through the [Know Yourself](#) profiling tool

**Step 2: Navigate Pathways**

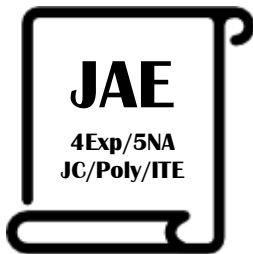
- Discover [job roles/industries](#) and how they fit into [Singapore's Industry Landscape](#).
- Explore [educational institutes & courses](#) that leads to your career aspirations

**Step 3: Owning Informed Decisions**

- Develop tentative Education & Career Plans (log-in required) by setting goals and taking positive steps



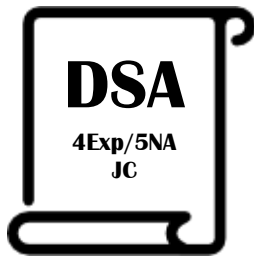
## Joint Admissions and Direct/Early Admissions



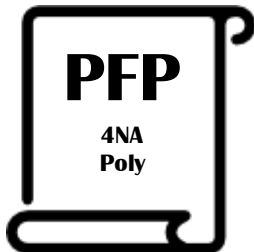
Joint Admission Exercise (JAE) allows O-Levels certificate holders to apply for admission to junior colleges(JC), Millennia Institute (MI), polytechnics and the Institute of Technical Education (ITE)



The Joint Intake Exercise (JIE) allows students who have taken the N-Level or O-Level examinations to apply directly to the Institute of Technical Education (ITE).



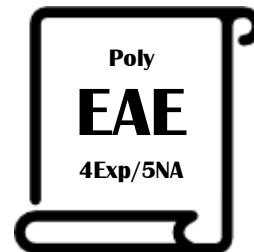
Direct School Admission for junior colleges (DSA-JC) allows students to apply to a DSA school before taking the GCE O-Level examinations. You can apply based on your talent in sports, CCAs and specific academic areas that may not be demonstrated at the O-Level examinations.



Polytechnic Foundation Programme (PFP) is a diploma-specific foundation programme that is one of the two through-train pathways to polytechnics for Normal (Academic). It aims to prepare well-performing Sec 4 N(A) students for progression into selected polytechnic diploma courses. The programme is conducted over 2 academic semesters at the polytechnics and serves as an alternative to Sec 5.



Institute of Technical Education Early Admission Exercise (ITE EAE) is an aptitude-based admissions exercise that allows students to apply and receive conditional offers for admission to ITE before receiving their O-Level or N-Level examinations results, or final Nitec Grade Point Average (GPA).

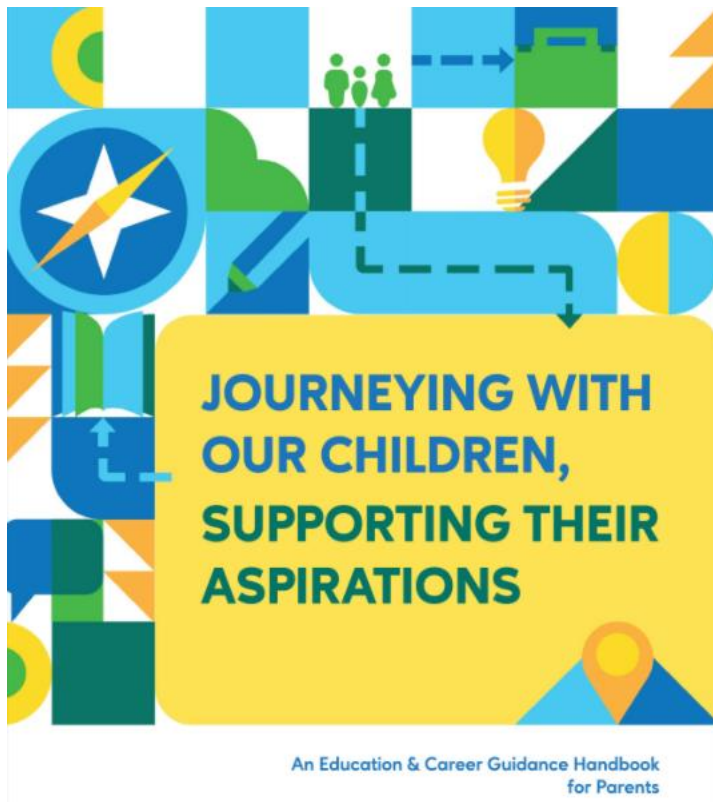


Polytechnic Early Admissions Exercise (Poly EAE) is an aptitude-based admissions exercise that allows students to apply for and receive conditional offers for admission to polytechnics prior to receiving their O-Level examination results or final Higher Nitec Grade Point Average (GPA).



Direct-Entry-Scheme to Polytechnic Programme (DPP) allows Secondary 4 N(A) students to be admitted directly into a 2-year Higher Nitec programme at the Institute of Technical Education (ITE) without having to sit for the O-Level examinations or undergo a Nitec programme. If you successfully complete the course with the minimum required GPA, you are guaranteed a place in a polytechnic diploma course mapped to your Higher Nitec course.

## ECG Parent Guide



ECG helps students gain a better understanding of themselves so that they can explore relevant education and career pathways that enable them to make informed choices and develop their education and career goals. As a parent, you are one of the key decision influencers in your children's education and career aspirations. This handbook is written especially for you to help you understand how you can engage your children in conversations and activities to support them in their education and career decisions. **Click the picture for more tips and suggestions!**

## Additional Resources

The Next Step Forward

An e-book that illustrates how 54 individuals go through diverse education and career pathways

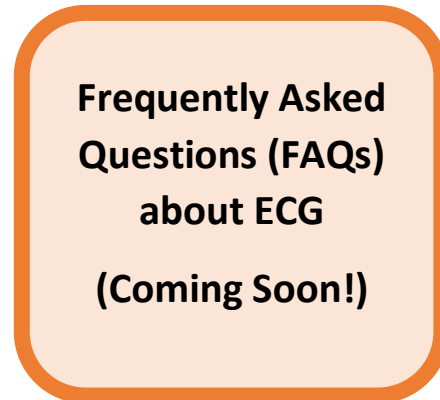
<https://www.moe.gov.sg/microsites/next-step-forward/#p=14>

Progression from ITE to Polytechnic

<https://jpae.polytechnic.edu.sg/app>



## Need Help?



We have an ECG Counsellor to provide support to students (individually or in small groups). Students who would like to explore more in areas such as subject choices, course options or to find out more about their strengths and interests can have a chat with our school's ECG Counsellor.

To make an appointment with Ms Catherine Ng, ECG Counsellor, please email her at [Ng\\_Hui\\_Fong\\_Catherine@Schools.gov.sg](mailto:Ng_Hui_Fong_Catherine@Schools.gov.sg)